



IMPORTANT

Due to the thin wall tubular design of this spout, please note the following:

- Spout is not meant to be used as a support or grab device. Any excessive weight, pulling or grabbing of spout may cause damage or injury and will void the warranty.
- It may be necessary to initially operate at full flow, then reduce the flow to retain the desired "sheet" flow effect at lower operating water volume (72/73 /series only).

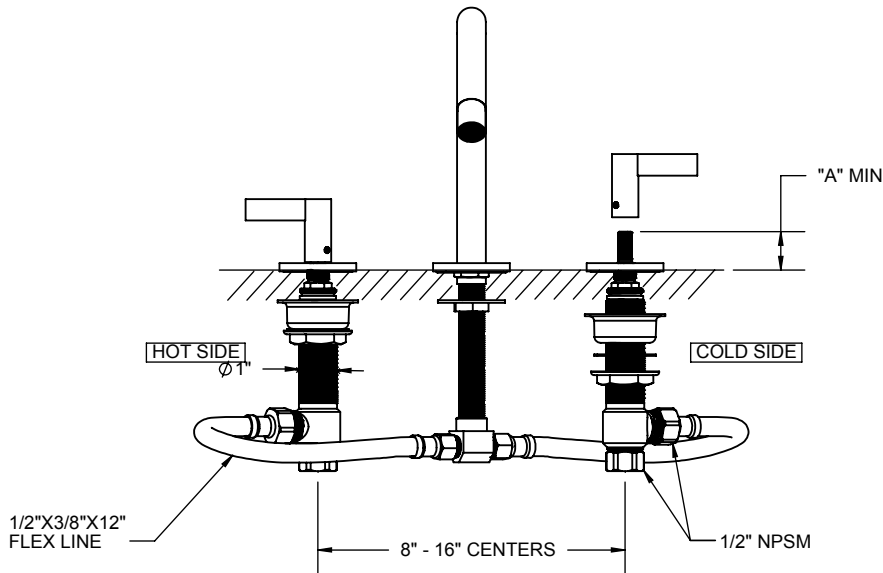
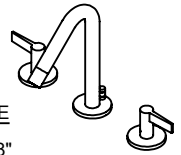


Fig. 1

All Widespread faucets meet A112.18.1 - 2.2gpm/8.3 L/min.

#7102

"A" = 1"

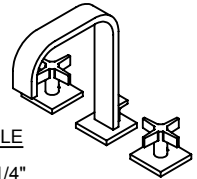


THROUGH-HOLE

SPOUT: \varnothing 1-1/8"
VALVE: \varnothing 1"

#7202

"A" = 3/4"

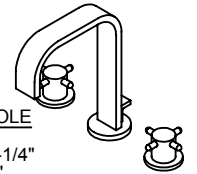


THROUGH-HOLE

SPOUT: \varnothing 1-1/4"
VALVE: \varnothing 1"

#7302

"A" = 1"



THROUGH-HOLE

SPOUT: \varnothing 1-1/4"
VALVE: \varnothing 1"

NOTE: SHUT OFF WATER SUPPLY BEFORE BEGINNING INSTALLATION

1

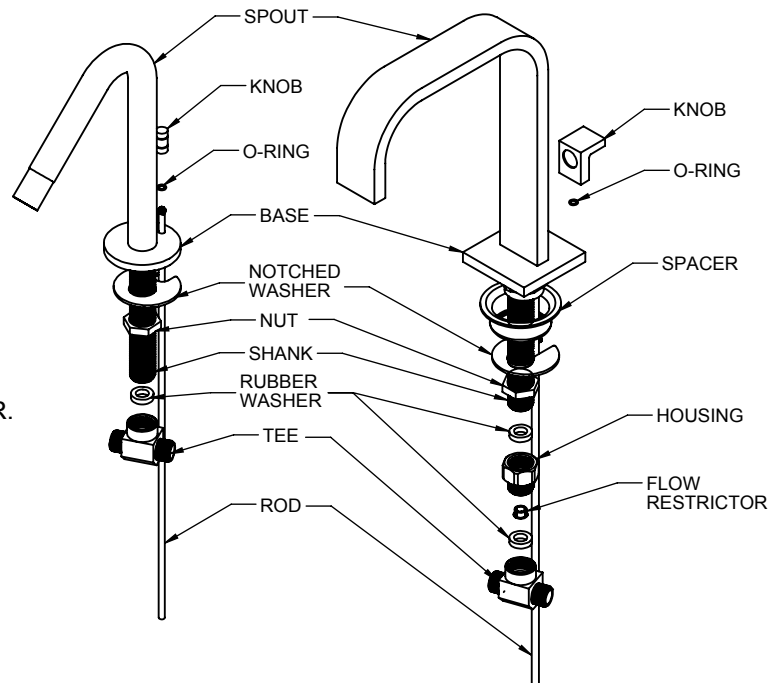
Install spout and lift rod with lift knob:

FOR 71 SERIES (See Fig. 2A)

- Remove TEE, NUT, and notched WASHER.
- Insert SPOUT thru center hole of sink/countertop.
- Slip notched WASHER over spout SHANK.
- Align notch for lift ROD to pass thru then thread NUT onto the spout SHANK.
- Align SPOUT and tighten NUT firmly.
- Place rubber WASHER into top of TEE and tighten assembly onto spout SHANK.
- Attach lift KNOB onto lift ROD and slide O-RING up.
- Insert lift ROD down through spout BASE.

FOR 72 & 73 SERIES (See Fig. 2B)

- Remove TEE, HOUSING, NUT, WASHER and SPACER.
- Insert SPOUT thru center hole of sink/countertop.
- Slip SPACER and notched WASHER onto spout SHANK. Align notch for lift ROD to pass through then thread NUT onto the spout SHANK.
- Align SPOUT and tighten NUT firmly.
- Place rubber WASHER into top of restrictor HOUSING and tighten assembly onto spout SHANK.
- Place rubber WASHER into top of TEE and tighten assembly onto restrictor HOUSING.
- Attach lift KNOB onto lift ROD and slide O-RING up.
- Insert lift ROD down through spout BASE.



71 Series
Fig. 2A

72 & 73 Series
Fig. 2B

2 Install valve bodies (See Fig. 1 & 3):

NOTE: Hot & cold valves are labeled: *RED* = hot & *BLUE* = cold.

- Remove top nut and discard.
- Turn bottom nut with fiber washer down the valve until it stops.
- Place spacer cup onto valve oriented correctly as shown.
- Insert valve through hole from below.
- Attach and thread escutcheon onto threads below stem and adjust valve to scheduled height "A".
- Place handle onto stem allowing minimal gap between escutcheon and handle. Tighten setscrews with Allen key provided.
- Align handle in desired position and tighten the bottom nut to secure valve.

NOTE: Align square escutcheon on 7202 Series prior to securing valve.

- Attach flex lines between valves and spout tee.
- Flex lines shall be handtightened, then tighten 1/4 to 1/2 turn with wrench. (wrench not supplied).

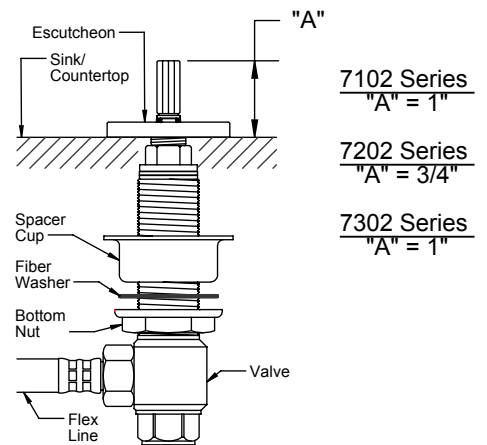


Fig. 3

3 Install pop-up assembly (See Fig 4 & 5):

- Separate drain collar from pop-up assembly.
- Apply silicon caulking to underside of drain collar. **NOTE: Do not use "Plumbers Putty" or any oil based sealants! Use of anything other than silicon caulking will VOID the finish warranty.**
- Insert drain body from underside through sink. Slowly screw on drain collar, align with ball rod hole facing back wall, then gently pull down into sink and firmly tighten brass nut from below.
- Remove tailpiece from drain body and apply teflon tape, approx. 3 to 5 wraps around threads and reinstall into bottom of drain body.
- Insert stopper in collar and hold with eye-screw hole facing back. If necessary, adjust stopper eye-screw height by loosening lock nut and rotating counter-clockwise. Tighten lock nut (See Fig. 4).
- Remove spring clip from ball rod.
- Remove nut and cone washers and slide onto end of ball rod.
- Insert ball rod into drain body below so short end of ball rod end fits in stopper eye-screw hole. Snug ball rod nut (do not over tighten). Ball rod must move up & down freely (See Fig. 4).
- Insert lift rod through top of spout and then through hole rod strap underneath sink. Tighten thumb-screw of hole rod strap against lift rod and connect to ball rod by gently pinching locking spring clip and sliding one side of spring clip onto ball rod.
- Insert hole strap onto ball rod, then pinch spring clip together to fit on ball rod.

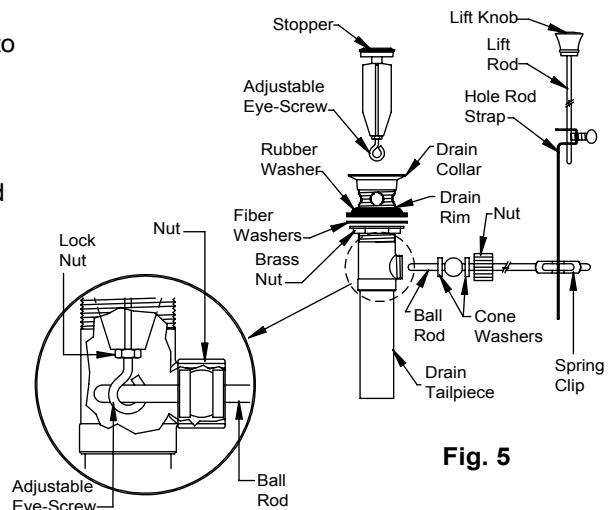


Fig. 5

Fig. 4

4 Connect faucet to water supply (See Fig. 6):

IMPORTANT: Flush supply lines of all debris prior to connecting to lavatory valve bodies. Debris remaining in the line will damage valve bodies and cause leaking. Failure to flush the lines could result in voiding the warranty.

- Connect supply risers from the angle stops.

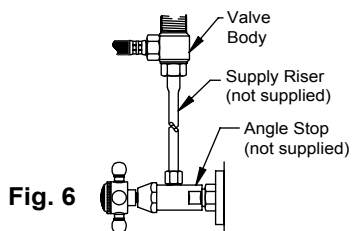


Fig. 6

5 Install "P" trap (See Fig. 7):

- Connect your waste "P" trap to the drain tailpiece.

NOTE:
P-trap, angle stops, and supply risers are not supplied. We recommend genuine Cal-Trim parts available at your authorized California Faucets dealer.

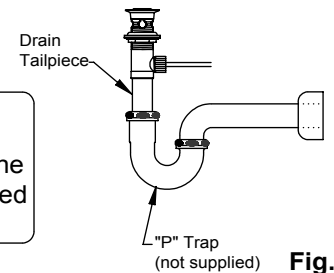


Fig. 7

6 Turn on Water Supply:

Operate hot and cold valves: Inspect all joints and fittings for leaks.

NOTE: Due to sediment in the water it may be necessary on occasion to remove the aerator/flow restrictor and clean the screen with a soft bristle toothbrush.

IMPORTANT CLEANING NOTICE: Please refer to *Finish Care Instructions* for complete cleaning information. Wipe frequently with a soft, damp cloth. **Never use acids, harsh abrasives or detergents.**