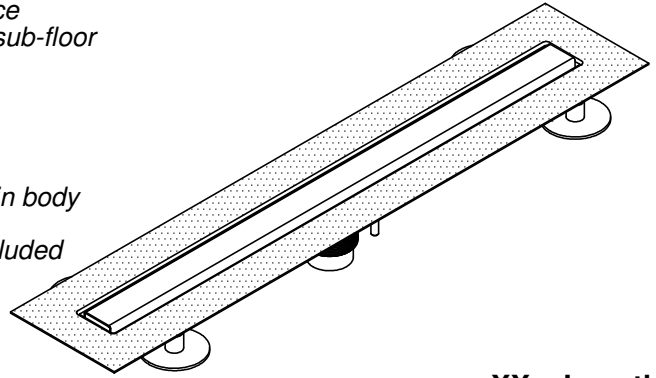




**Features**

- Available in 6 finishes
- Stainless steel trim cover & drain rough
- Removable trim cover with no visible screws
- Height adjustable leveling pads position trim cover flush with tile surface
- Height adjustable support legs on drain rough to accommodate uneven sub-floor
- Drain rough design prevents standing water
- Outlet flow rate 14 gpm (53 Lpm) with 1/4" head of water
- Removable debris strainer
- Compatible with following waterproofing systems:
  - Liquid membrane with direct No-Hub connection
  - Hot mop or PVC/CPE when used with 2" IPS clamping flange drain body
- Sanded flange to secure liquid membrane waterproofing
- Tile trim template, tile straight edge framing holders and mudguard included

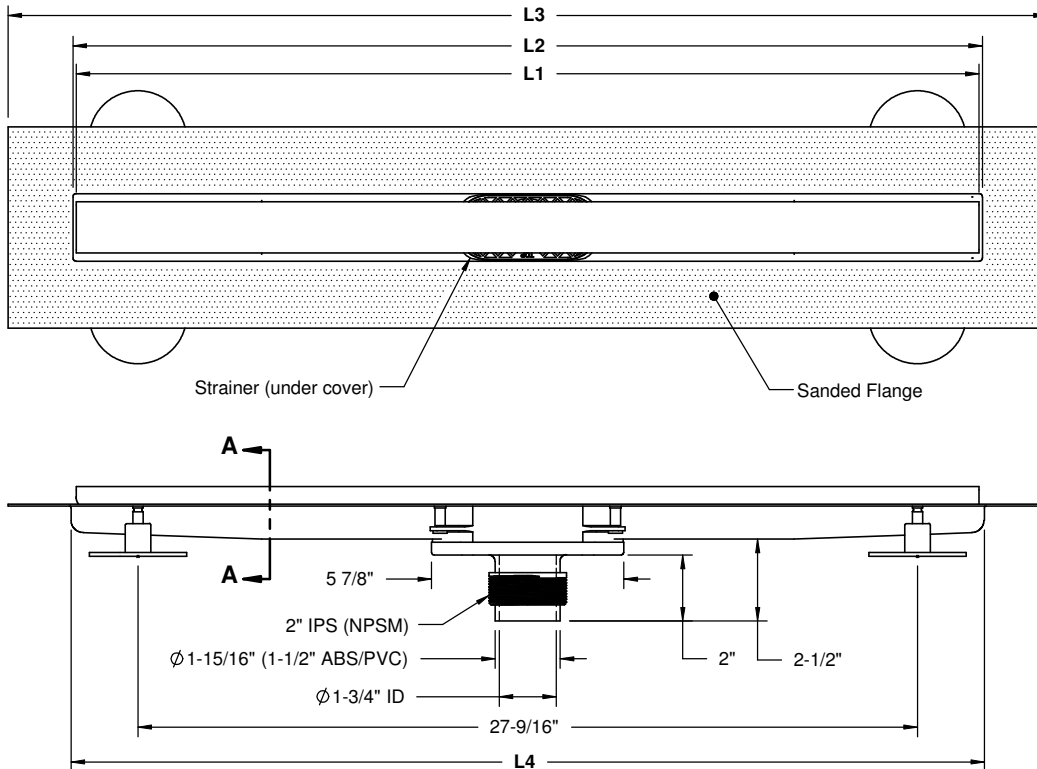


**Codes/Standards Applicable**

Specified model meets or exceeds the following:

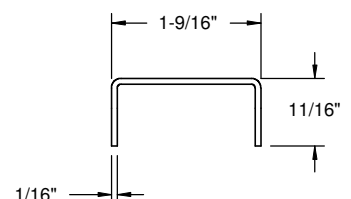
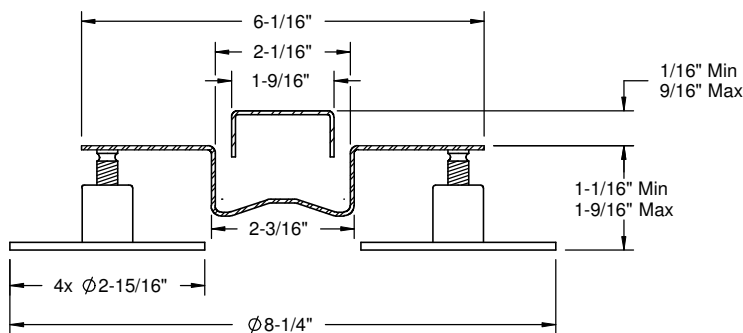
- ASME A112.18.2-2005/CSA B125.2-05 & IAPMO IGC 195-2010

**XX = Length**  
(28", 32", 36", 40", 48")



MODEL	L1	L2	L3	L4	MIN INSTALL LENGTH
9180-28	27 <sup>3</sup> / <sub>8</sub>	27 <sup>9</sup> / <sub>16</sub>	31 <sup>1</sup> / <sub>2</sub>	27 <sup>11</sup> / <sub>16</sub>	32
9180-32	31 <sup>3</sup> / <sub>16</sub>	31 <sup>1</sup> / <sub>2</sub>	35 <sup>7</sup> / <sub>16</sub>	31 <sup>5</sup> / <sub>8</sub>	36
9180-36	35 <sup>1</sup> / <sub>4</sub>	35 <sup>7</sup> / <sub>16</sub>	39 <sup>3</sup> / <sub>8</sub>	35 <sup>9</sup> / <sub>16</sub>	40
9180-40	39 <sup>3</sup> / <sub>16</sub>	39 <sup>3</sup> / <sub>8</sub>	43 <sup>5</sup> / <sub>16</sub>	39 <sup>1</sup> / <sub>2</sub>	44
9180-48	47 <sup>1</sup> / <sub>16</sub>	47 <sup>1</sup> / <sub>4</sub>	51 <sup>3</sup> / <sub>16</sub>	47 <sup>3</sup> / <sub>8</sub>	52

**Section A-A**  
Scale 2:1



**Trim Cover Profile**

All Dimensions Shown To Nearest 1/16"

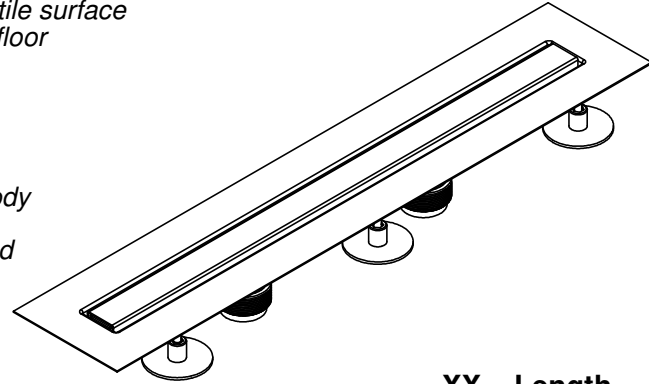


**Features**

- Only available in natural stainless steel
- Stainless steel recess trim cover & drain rough
- Removable recess trim cover with no visible screws
- Height adjustable leveling pads position tile in recess trim cover flush with tile surface
- Height adjustable support legs on drain rough to accomodate uneven sub-floor
- Drain rough design prevents standing water
- Dual outlet total flow rate 28 gpm (106 Lpm) with 1/4" head of water
- Removable debris strainers
- Compatible with following waterproofing systems:
  - Liquid membrane with direct No-Hub connection
  - Hot mop or PVC/CPE when used with 2" IPS clamping flange drain body
- Sanded flange to secure liquid membrane waterproofing
- Tile trim template, tile straight edge framing holders and mudguard included

**9180-DXX**

(9185-DXX & 9188-DXX)

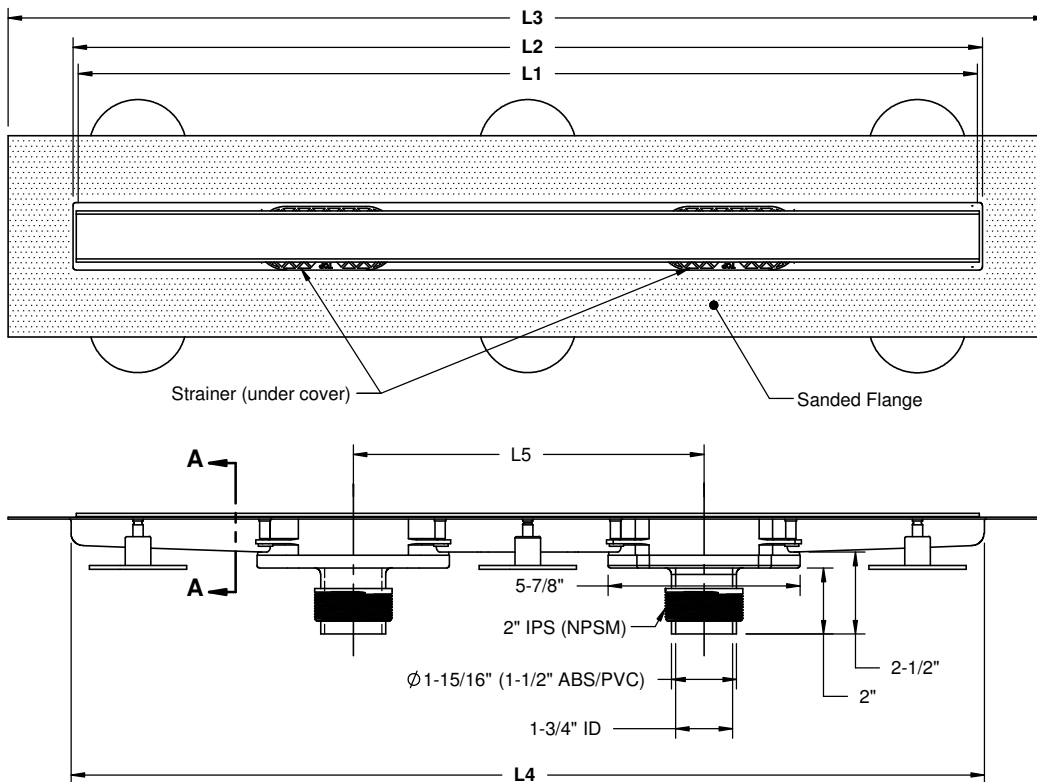


**XX = Length**  
(52", 56", 60", 63", 67", 71", 75", 79")

**Codes/Standards Applicable**

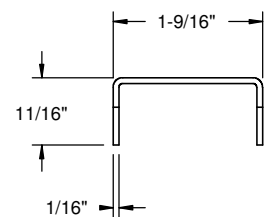
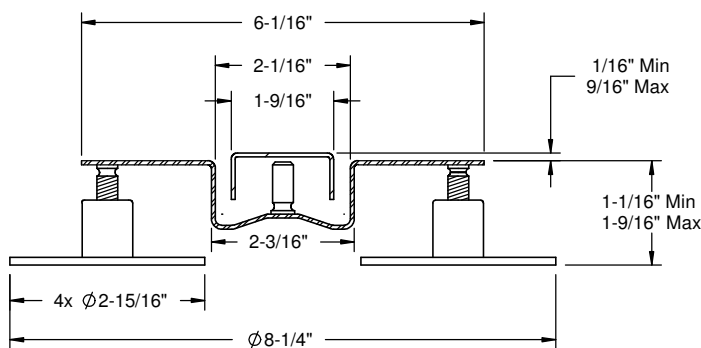
Specified model meets or exceeds the following:

- ASME A112.18.2-2005/CSA B125.2-05 & IAPMO IGC 195-2010



MODEL	L1	L2	L3	L4	L5	MIN INSTALL LENGTH
9180-D52	51	51 <sup>3</sup> / <sub>16</sub>	55 <sup>5</sup> / <sub>8</sub>	51 <sup>1</sup> / <sub>16</sub>	19 <sup>11</sup> / <sub>16</sub>	56
9180-D56	55	55 <sup>1</sup> / <sub>8</sub>	59 <sup>1</sup> / <sub>16</sub>	55 <sup>1</sup> / <sub>4</sub>	19 <sup>11</sup> / <sub>16</sub>	60
9180-D60	58 <sup>15</sup> / <sub>16</sub>	59 <sup>1</sup> / <sub>16</sub>	63	59 <sup>3</sup> / <sub>16</sub>	23 <sup>5</sup> / <sub>8</sub>	63
9180-D63	62 <sup>7</sup> / <sub>8</sub>	63	66 <sup>15</sup> / <sub>16</sub>	63 <sup>1</sup> / <sub>8</sub>	23 <sup>5</sup> / <sub>8</sub>	67
9180-D67	66 <sup>3</sup> / <sub>4</sub>	66 <sup>15</sup> / <sub>16</sub>	70 <sup>7</sup> / <sub>8</sub>	67 <sup>1</sup> / <sub>16</sub>	27 <sup>9</sup> / <sub>16</sub>	71
9180-D71	70 <sup>3</sup> / <sub>4</sub>	70 <sup>7</sup> / <sub>8</sub>	74 <sup>13</sup> / <sub>16</sub>	71	27 <sup>9</sup> / <sub>16</sub>	75
9180-D75	74 <sup>5</sup> / <sub>8</sub>	74 <sup>13</sup> / <sub>16</sub>	78 <sup>3</sup> / <sub>4</sub>	75	31 <sup>1</sup> / <sub>2</sub>	79
9180-D79	78 <sup>9</sup> / <sub>16</sub>	78 <sup>3</sup> / <sub>4</sub>	82 <sup>11</sup> / <sub>16</sub>	78 <sup>7</sup> / <sub>8</sub>	31 <sup>1</sup> / <sub>2</sub>	83

**Section A-A Scale 2:1**



**Trim Cover Profile**

All Dimensions Shown To Nearest 1/16"