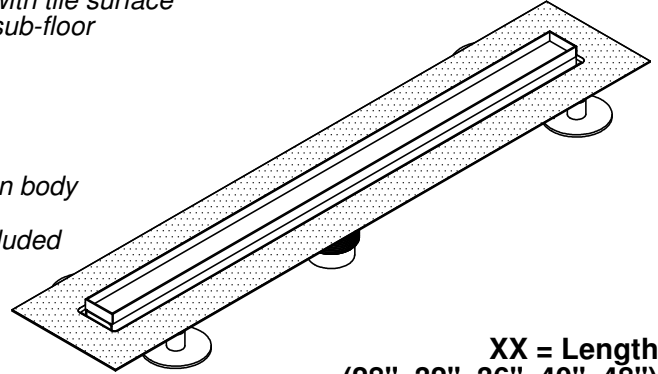




9182-XX

Features

- Available in natural & blackened stainless steel
- Tile recess trim cover plate to accept matching tile, stone, marble, etc.
- Stainless steel recess trim cover & drain rough
- Removable recess trim cover with no visible screws
- Height adjustable leveling pads position tile in recess trim cover flush with tile surface
- Height adjustable support legs on drain rough to accommodate uneven sub-floor
- Drain rough design prevents standing water
- Outlet flow rate 14 gpm (53 Lpm) with 1/4" head of water
- Removable debris strainer
- Compatible with following waterproofing systems:
 - Liquid membrane with direct No-Hub connection
 - Hot mop or PVC/CPE when used with 2" IPS clamping flange drain body
- Sanded flange to secure liquid membrane waterproofing
- Tile trim template, tile straight edge framing holders and mudguard included

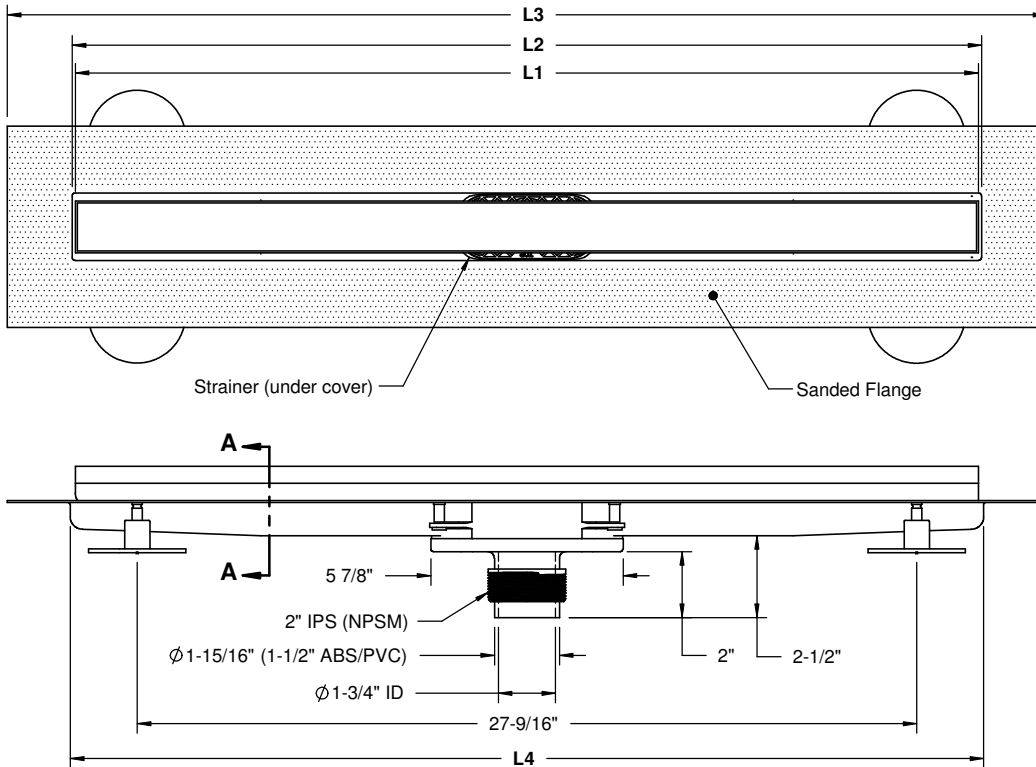


XX = Length
(28", 32", 36", 40", 48")

Codes/Standards Applicable

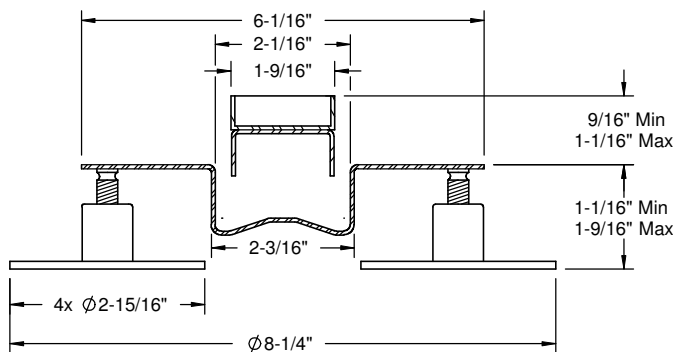
Specified model meets or exceeds the following:

- ASME A112.18.2-2005/CSA B125.2-05 & IAPMO IGC 195-2010

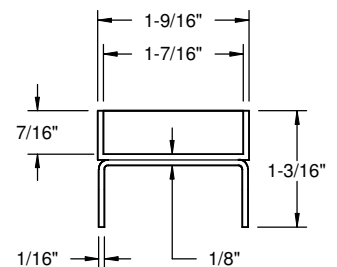


MODEL	L1	L2	L3	L4	MIN INSTALL LENGTH
9182-28	27 ³ / ₈	27 ⁹ / ₁₆	31 ¹ / ₂	27 ¹¹ / ₁₆	32
9182-32	31 ³ / ₁₆	31 ¹ / ₂	35 ⁷ / ₁₆	31 ⁵ / ₈	36
9182-36	35 ¹ / ₄	35 ⁷ / ₁₆	39 ³ / ₈	35 ⁹ / ₁₆	40
9182-40	39 ³ / ₁₆	39 ³ / ₈	43 ⁵ / ₁₆	39 ¹ / ₂	44
9182-48	47 ¹ / ₁₆	47 ¹ / ₄	51 ³ / ₁₆	47 ³ / ₈	52

Section A-A
Scale 2:1



All Dimensions Shown To Nearest 1/16"



Trim Cover Profile

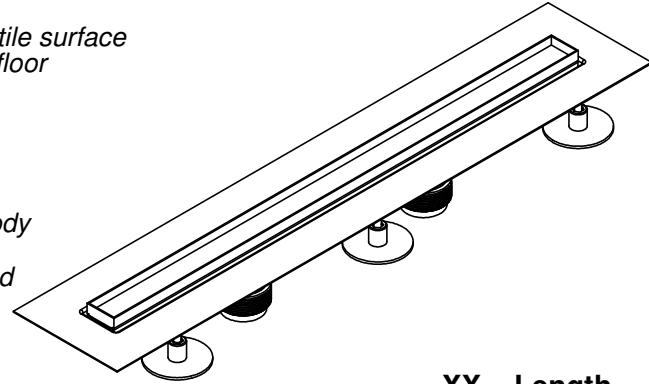


Features

- Only available in natural stainless steel
- Tile recess trim cover plate to accept matching tile, stone, marble, etc...
- Stainless steel recess trim cover & drain rough
- Removable recess trim cover with no visible screws
- Height adjustable leveling pads position tile in recess trim cover flush with tile surface
- Height adjustable support legs on drain rough to accomodate uneven sub-floor
- Drain rough design prevents standing water
- Dual outlet total flow rate 28 gpm (106 Lpm) with 1/4" head of water
- Removable debris strainers
- Compatible with following waterproofing systems:
 - Liquid membrane with direct No-Hub connection
 - Hot mop or PVC/CPE when used with 2" IPS clamping flange drain body
- Sanded flange to secure liquid membrane waterproofing
- Tile trim template, tile straight edge framing holders and mudguard included

9182-DXX

(9187-DXX & 9188-DXX)

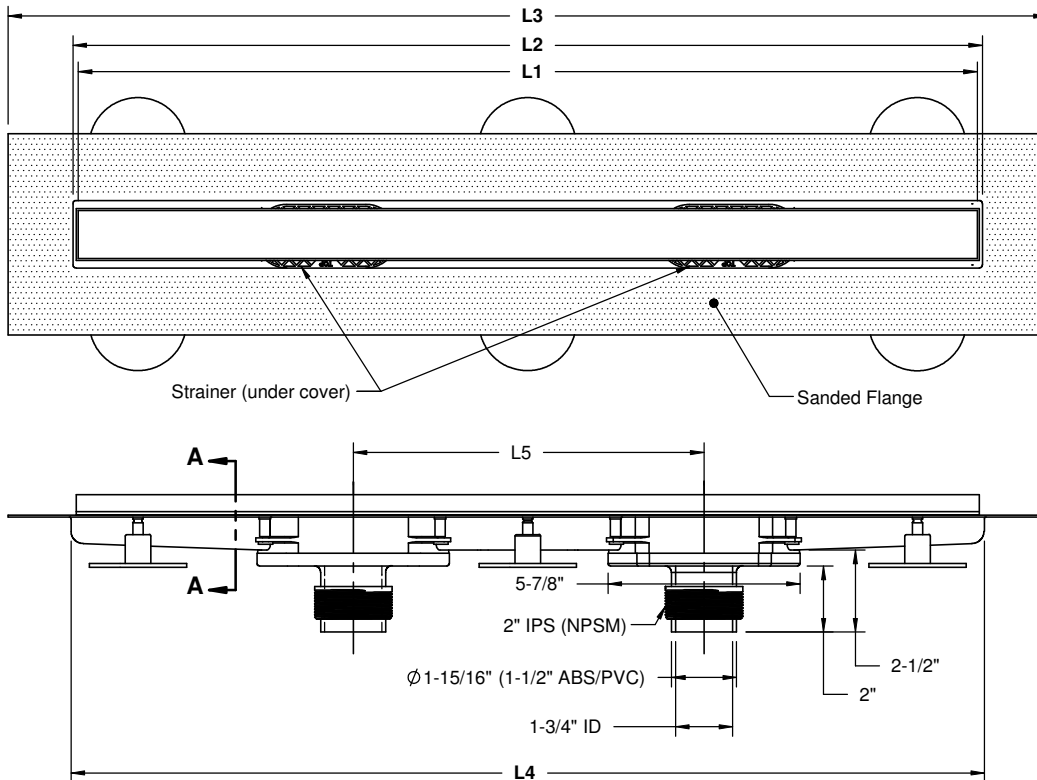


XX = Length
(52", 56", 60", 63", 67", 71", 75", 79")

Codes/Standards Applicable

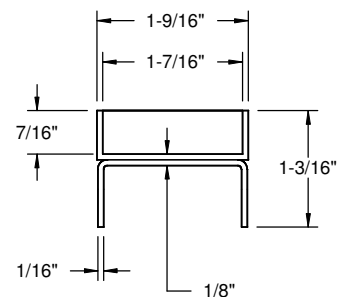
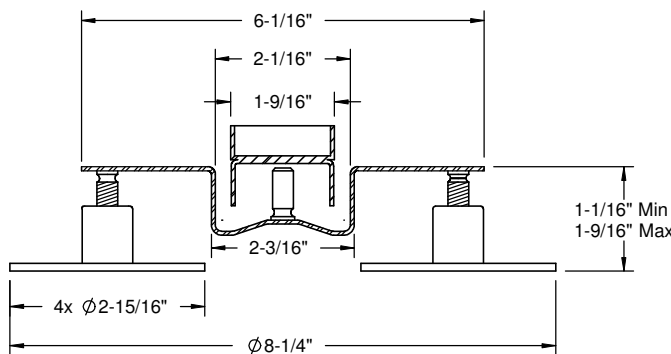
Specified model meets or exceeds the following:

- ASME A112.18.2-2005/CSA B125.2-05 & IAPMO IGC 195-2010



MODEL	L1	L2	L3	L4	L5	MIN INSTALL LENGTH
9182-D52	51	51 ³ / ₁₆	55 ⁵ / ₈	51 ¹ / ₁₆	19 ¹¹ / ₁₆	56
9182-D56	55	55 ¹ / ₈	59 ¹ / ₁₆	55 ¹ / ₄	19 ¹¹ / ₁₆	60
9182-D60	58 ¹⁵ / ₁₆	59 ¹ / ₁₆	63	59 ³ / ₁₆	23 ⁵ / ₈	63
9182-D63	62 ⁷ / ₈	63	66 ¹⁵ / ₁₆	63 ¹ / ₈	23 ⁵ / ₈	67
9182-D67	66 ³ / ₄	66 ¹⁵ / ₁₆	70 ⁷ / ₈	67 ¹ / ₁₆	27 ⁹ / ₁₆	71
9182-D71	70 ³ / ₄	70 ⁷ / ₈	74 ¹³ / ₁₆	71	27 ⁹ / ₁₆	75
9182-D75	74 ⁵ / ₈	74 ¹³ / ₁₆	78 ³ / ₄	75	31 ¹ / ₂	79
9182-D79	78 ⁹ / ₁₆	78 ³ / ₄	82 ¹¹ / ₁₆	78 ⁷ / ₈	31 ¹ / ₂	83

Section A-A
Scale 2:1



Trim Cover Profile

All Dimensions Shown To Nearest 1/16"