

California Faucets reserves the right to make modification and specification changes at any time. Please visit [www.calfaucets.com](http://www.calfaucets.com) for most current technical data.

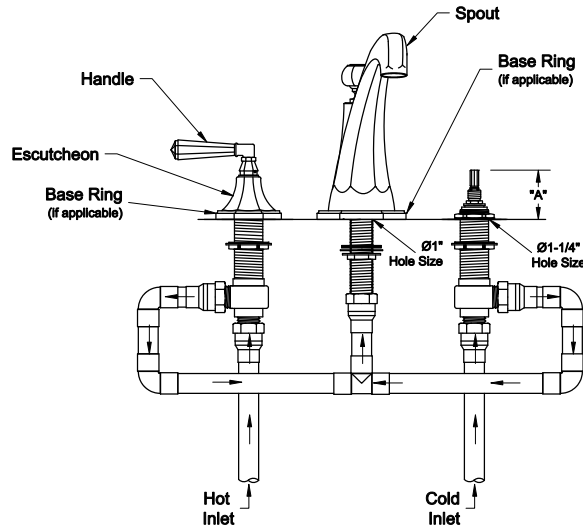


Fig. 1

**NOTE:**  
 -The manufacturer recommends the use of hard piping (not flex connections) for all connections.  
 -It is also recommended that an access panel be provided for all Roman Tub installations.

**1**

### Roman Tub Spout Connectors

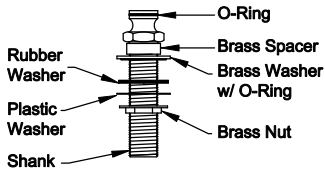


Fig. 2A



Fig. 2B



Fig. 2C



Fig. 2D

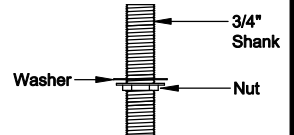



Fig. 2E

<p><b>Quick Connect</b>  <b>Model #: QC-50</b>                  Use With Rough Kit #: 08-75-50</p>	<p><b>Quick Connect</b>  <b>Model #: QC-99</b>                  Use With Rough Kit #: 08-75-99</p>	<p><b>Quick Connect</b>  <b>Model #: QC-63</b>                  Use With Rough Kit #: 08-75-63</p>	<p><b>Quick Connect</b>  <b>Model #: QC-63</b>                  Use With Rough Kit #: 08-75-65</p>	<p><b>3/4" Nipple</b>  <b>Model #: QC-75</b>                  Use With Rough Kit #: 08-75-75</p>
<p><b>For Series #:</b>                  5008</p>	<p><b>For Series #:</b>                  3208 3308 3408 3508                  3608 3808 4008 4208                  4308 4608 4708 5108                  5208 5508 5708 5808                  5908 6008 6408 6708                  6808 6908 D-73</p>	<p><b>For Series #:</b>                  6308                  Series 6308 uses Broach Adapter</p> 	<p><b>For Series #:</b>                  6508                  6608</p>	<p><b>For Series #:</b>                  5308</p>

**For All Series Except: 5308**

- Remove brass nut, plastic washer and rubber washer from Quick Connect assembly.
- Ensure that O-ring is properly seated in brass washer.
- Insert Quick Connect assembly through hole in deck.
- Place Rubber Washer, Plastic Washer and Brass Nut onto Shank from below and firmly tighten.
- Seat Spout onto Quick Connect.
- Rotate Spout to desired position and tighten setscrew.
- Use thread sealant to seal all fittings with threads.

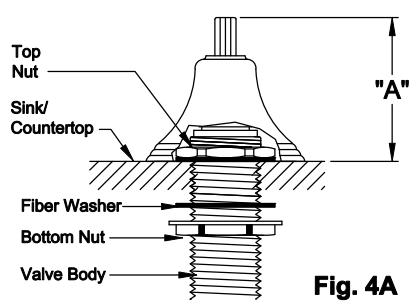
**For Series: 5308**

- Apply thread sealant to one end of the Shank and tighten into Spout.
- Place spout base ring (if applicable) onto deck, over the spout shank.
- Insert Shank through deck hole and from below place Washer and Nut onto Shank.
- Rotate Spout to desired position and firmly tighten nut.
- Use thread sealant to seal all fittings with threads.

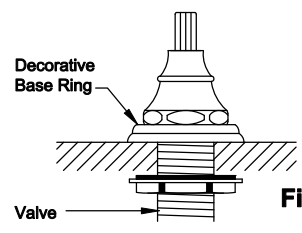
**IMPORTANT:** All soldering shall be performed prior to attaching fitting to Valves and Quick Connect, otherwise severe damage may take place and void warrantee

**2 Install valve bodies:**

**NOTE:** Hot & cold valves are labeled: *cold=blue & hot=red*.  
 -Remove top nut and turn bottom nut with fiber washer down the valve until it stops.  
 -Insert valve through hole from below and install top nut (if applicable), and adjust to proper height, see Fig. 4A (also refer to "A" dimension).  
 -Tighten the bottom nut to secure the valve.  
 -Install trim parts (base ring if applicable), escutcheon and handle and tighten handle set screws with Allen key provided.  
**REMINDER: Please retain allen key as handles may require re-tightening with normal use.**



**Fig. 4A**



**Fig. 4B**

**Installation Note for series:**

**# 32, 33, 34, 35, 36, 43, 57, 60, 61, 67, 68 & 69.**  
 The trim to those products do not require a top nut to be installed on the valve (See Fig. 4A)  
 The decorative base ring and escutcheon takes the place of the top nut. (See Fig. 4B).

**"A"  
DIMENSION**

"A" Dimension is from top of counter/tub top to tip of stem broach.

Series #	Handle	Diverter
3208	2 3/8"	2 3/8"
3308	2 3/8"	2 3/8"
3408	2 3/8"	2 3/8"
3508	2 3/8"	2 3/8"
3608	2 3/8"	2 3/8"
3808	2 5/8"	2 5/8"
4008	2 5/8"	2 5/8"
4208	2 5/8"	2 5/8"
4308	2 1/4"	2 1/4"
4608	2 1/2"	2 1/2"
4708	2 1/2"	2 1/2"
5008	2 1/4"	2 1/4"
5108	2 1/2"	2 1/2"
5208	2 5/8"	2 5/8"
5308	2 1/4"	2 1/4"
5508	2 5/8"	2 5/8"
5608	2"	2"
5708	2"	2"
5808	2 5/8"	2 5/8"
5908	2 5/8"	2 5/8"
6008	2 1/4"	2 1/4"
6108	2 1/4"	2 1/4"
6208	1 1/4"	1 1/4"
6308	3"	3"
6408	2 5/8"	2 5/8"
6508	2"	2"
6608	2"	2"
6708	2 1/4"	2 1/4"
6808	2 3/8"	2 3/8"
6908	2 3/8"	2 3/8"

**3 Piping:**

-Install piping (not provided) to connect hot & cold valves to connector tee (see Fig. 1).  
**NOTE: The manufacturer recommends these connections be made in hard copper.**