



California Faucets®

# Avalon™

## SINGLE HOLE LAVATORY FAUCET

### CF-6201-1

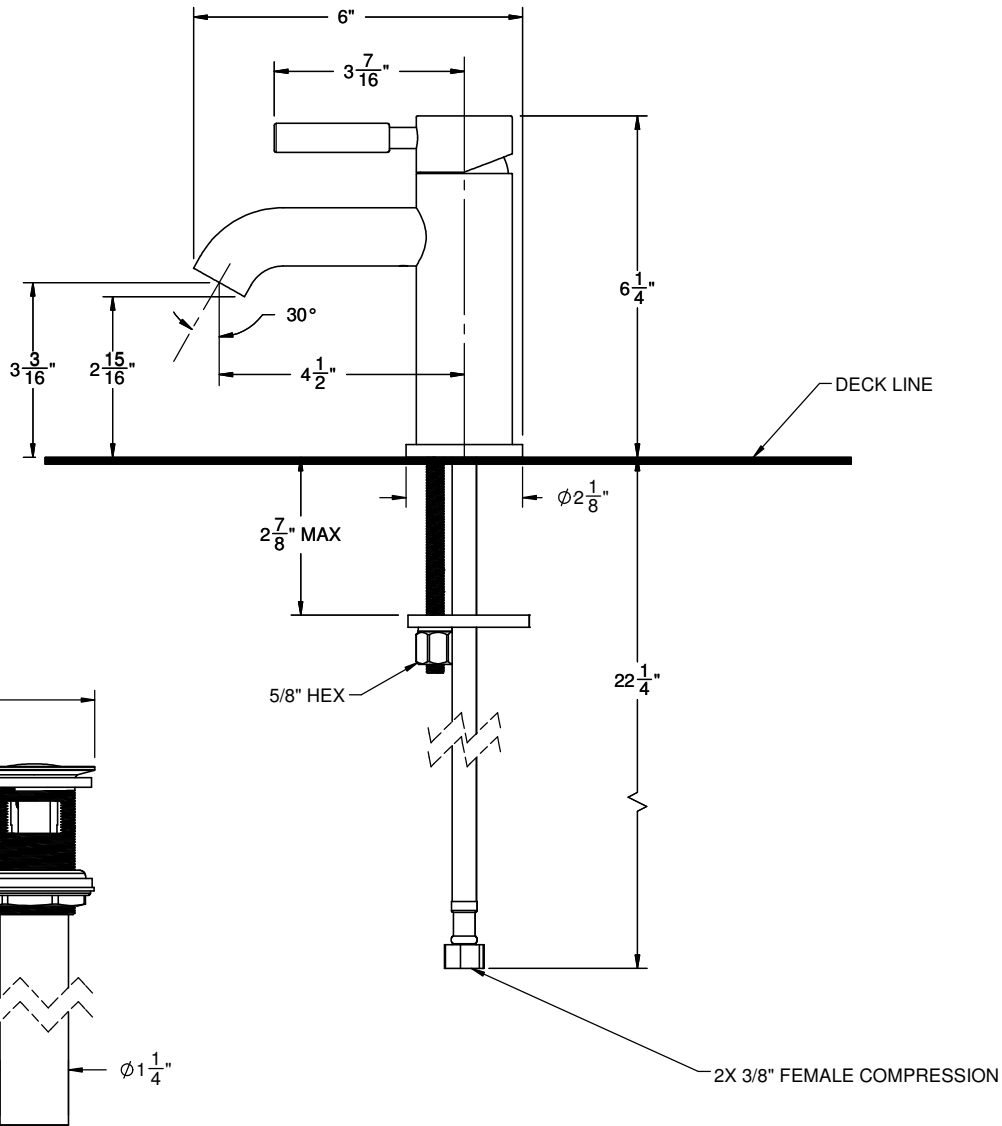
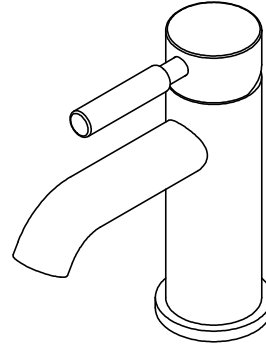
#### Features

- 3-1/2" spout center to center
- Single handle operation cartridge with ceramic disc
- Flexible braided hoses for ease of installation
- $\phi$  1-1/4" all brass lift rod style pop up drain assembly
- Flush mount aerator insert
- 1.2 gpm (4.5 L/min) max flow rate
- Solid brass construction
- Over 30 finishes including 15 PVD finishes

#### Codes/Standards Applicable

Specified model meets or exceeds the following:

- ASME A112.18.1/CSA B125.1
- NSF/ANSI 61 & NSF/ANSI 372
- CEC
- ADA compliant



#### Through-Hole Specifications

	Min	Recommended
Spout: $\phi$ 1-1/4"	$\phi$ 1-3/8"	$\phi$ 1-3/8"
Drain: $\phi$ 1-1/2"	$\phi$ 1-3/4"	$\phi$ 1-3/4"

ALL DIMENSIONS SHOWN TO THE NEAREST 1/16"