



California Faucets®

TRADITIONAL SINGLE HANDLE COMBO WATER DISPENSER

KITCHEN

Features

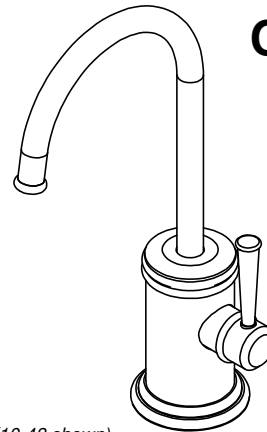
- All brass construction
- Insulated body & spout to reduce heat to faucet
- Self-closing for hot water
- Max flow rate: 0.5 gpm (1.9 L/min); may vary based on hot water tank used
- Over 30 finishes including 15 PVD finishes
- Requires separate Hot Water Tank (9628SS)

Codes/Standards Applicable

Meets or exceeds the following at date of manufacture:

- ASME A112.18.1/CSA B125.1
- NSF 61 and NSF 372
- CEC & DOE
- Commonwealth of MA
- ADA compliant

CF-9623-K10-XX

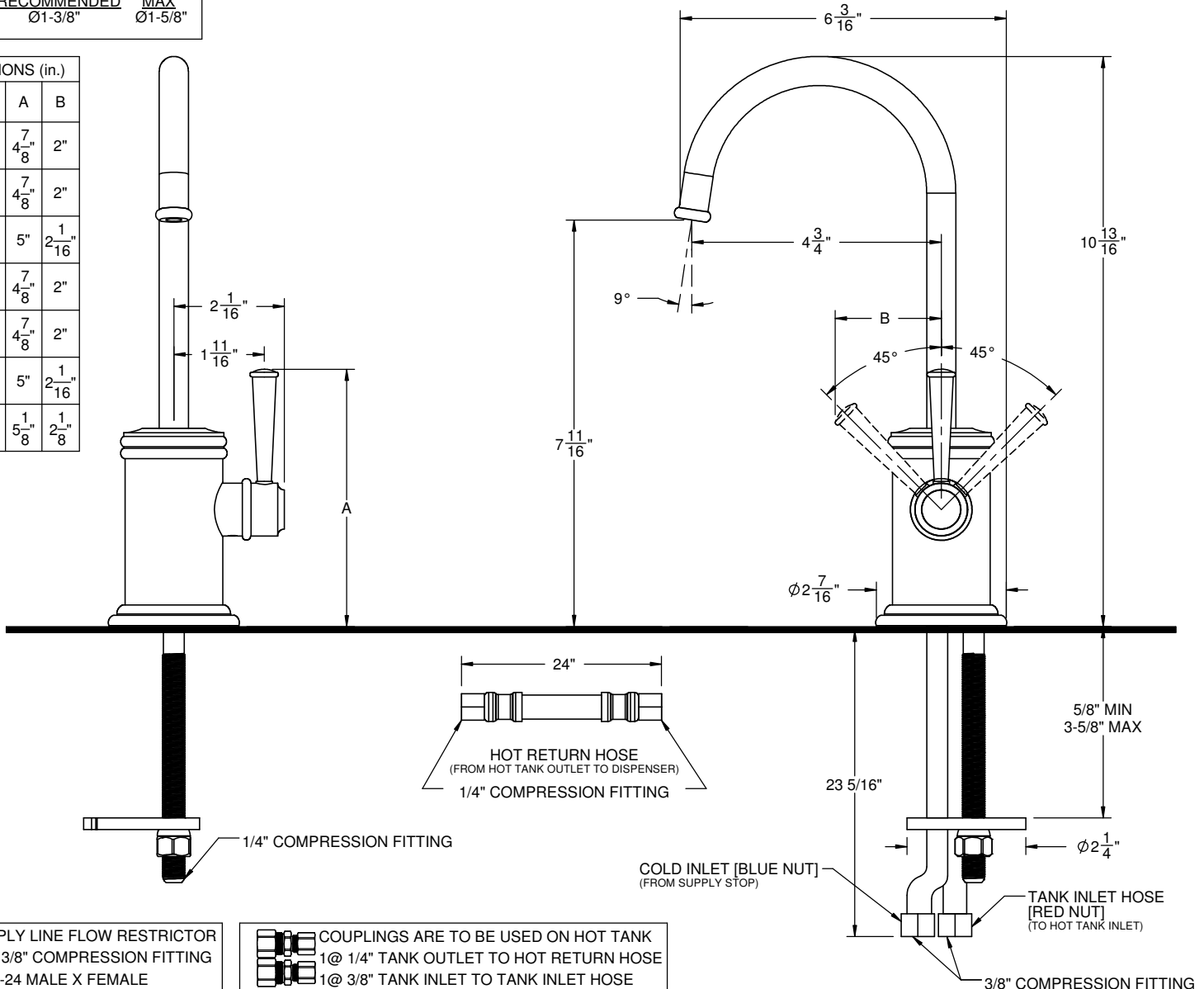


(CF-9623-K10-48 shown)

THROUGH-HOLE SPECIFICATIONS

MIN	RECOMMENDED	MAX
Ø1-1/4"	Ø1-3/8"	Ø1-5/8"

DIMENSIONS (in.)		
XX HANDLE	A	B
33	4 ⁷ / ₈ "	2"
35	4 ⁷ / ₈ "	2"
40	5"	2 ¹ / ₁₆ "
42	4 ⁷ / ₈ "	2"
48	4 ⁷ / ₈ "	2"
55	5"	2 ¹ / ₁₆ "
64	5 ¹ / ₈ "	2 ¹ / ₈ "



SUPPLY LINE FLOW RESTRICTOR FOR 3/8" COMPRESSION FITTING
9/16"-24 MALE X FEMALE

COUPLINGS ARE TO BE USED ON HOT TANK
1@ 1/4" TANK OUTLET TO HOT RETURN HOSE
1@ 3/8" TANK INLET TO TANK INLET HOSE

SPECIFICATIONS SUBJECT TO CHANGE WITHOUT NOTICE

ALL DIMENSIONS SHOWN TO NEAREST 1/16"